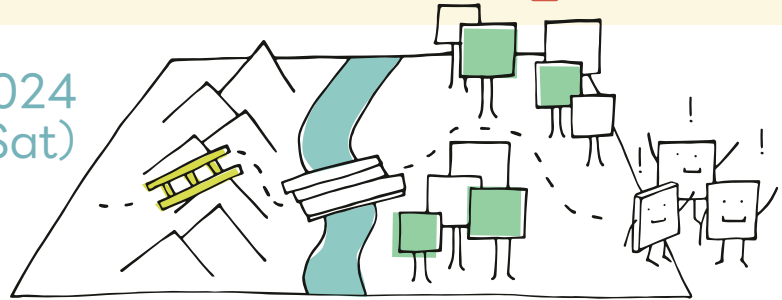


Learn from case studies What is effectual entrepreneurship?

October 19, 2024
(Sat)
9:15 - 12:15 9:00
Door opens



Osaka Metropolitan University I-site Namba 3rd Floor, OMU Living Labo, and Zoom
Nankai Namba Daiichi Building 3rd Floor, 2-1-41 Shikitsu Higashi, Naniwa-ku, Osaka City, Osaka 556-0012, JAPAN

Based on Ms. Tominaga's real-life experience of deciding to open an Italian restaurant in the business center of Osaka, we will learn a new perspective for accepting uncertainty and developing business flexibly.

We will welcome Ms. Tominaga to the venue and hold a discussion with participants. You will experience the application of effectuation in a real business scenario.

Guest

Ritsuko TOMINAGA

CEO, Re-mix Co., Ltd.



Born in Osaka. After graduating from a music college with a degree in vocal performance, she worked as a music teacher before founding Re-mix in 2002. Her merchandising business for major apparel brands was a success. Achieved sales of 100 million yen in the second year of the company's founding, which is the qualification for joining the Entrepreneur's Organization(EO), and became a member. Making use of her experience of visiting over 100 cities in 36 countries, she entered the restaurant business during the coronavirus pandemic, and in 2022 she opened her first physical restaurant, the pasta workshop/store "PASTA+", in Nishi-ku, Osaka City.

Lecturer/Moderator

Emi MAKINO

Associate Professor,
College of International Management,
Ritsumeikan Asia Pacific University(APU)

Hiromi YAMADA

Specially Appointed Lecturer,
Center for Advanced Education in
Entrepreneurship,
Osaka Metropolitan University

How to apply

Participation Fee Free

Please apply through the application form by Thursday, **October 17**.
<https://forms.office.com/r/WbY52gyViT>



Eligibility

Capacity: 30 in-person,
250 Zoom (first-come, first-served)

Undergraduate and Graduate students of Osaka Metropolitan University, Osaka City University and Osaka Prefecture University, and General Public

Organizing

Center for Advanced Education in Entrepreneurship and Innovation Faculty of Liberal Arts, Sciences and Global Education, Osaka Metropolitan University
Special Thanks to Ritsumeikan Asia Pacific University

Contact

Fledge Office, Center for Advanced Education in Entrepreneurship and Innovation, Faculty of Liberal Arts, Sciences and Global Education, Osaka Metropolitan University
TEL: +81-72-254-9671 Mail: gr-idec-fledge@omu.ac.jp